

### Content

3M wet wipe



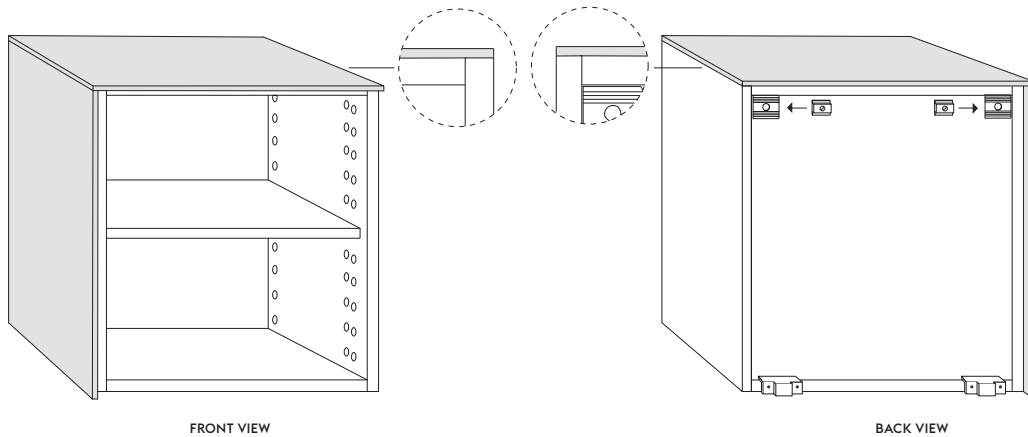
MountPads 10x10mm

(The number varies depending on the size of the top)



### Finished result

The result varies depending on the size of the frame.



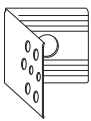
FRONT VIEW

BACK VIEW

### Mounting

#### 1. Mount the wall brackets on the cabinet.

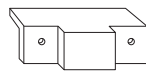
Mount the wall brackets supplied by Ikea before mounting the Superfront sides. This is important so that the top ends up in the right place on the cabinet.



BRACKET



SPACER FOR BRACKET



SPACER

#### 2. Clean the surfaces.

Use the attached 3M wet wipe to clean the surfaces of the cabinet and the Superfront top.



Continued on back page ►►►

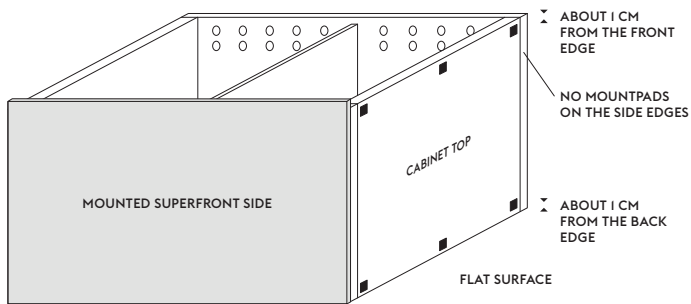
### Safety!

Be sure to always follow the safety instructions that apply to your furniture. Always secure the cabinet to the wall. This also applies to low cabinets where the weight distribution changes drastically when the fronts open. Especially in the case of solid quality fronts as ours. Use the anchor brackets supplied with the Ikea cabinet.

### 3. Attach the MountPads on the frame.

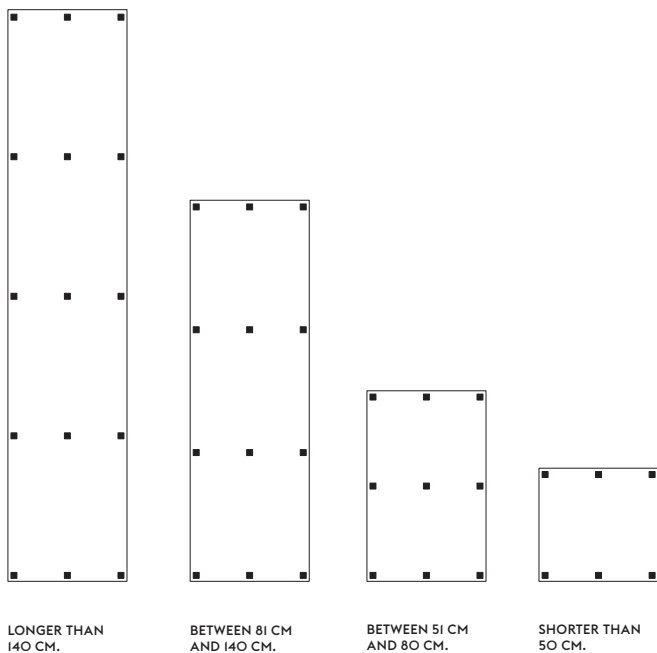
Place the frame on a hard, flat surface with the back-side down. Attach one MountPad in each corner of the cabinet top, inside the edges of the cabinet sides, and spread the rest as shown at the bottom of this page. Place them about 1 cm from the front and rear edge.

**NOTE!** Do not remove the cover paper from the MountPads yet!



#### Distribution of MountPads.

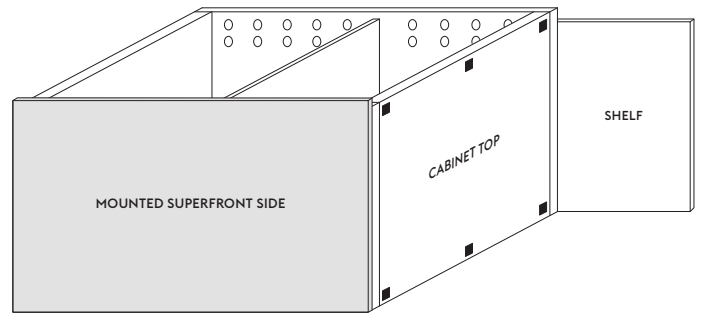
Here's how the MountPads should be distributed on the top of the cabinet frame.



### 4. Place support on the side of the frame.

Place a shelf or a similar flat surface along the side of the frame that's going to be connected to another frame. Ask someone for help to make sure that the surface is held tight against the side.

This support is for the top to end up aligned with the side edge of the frame.

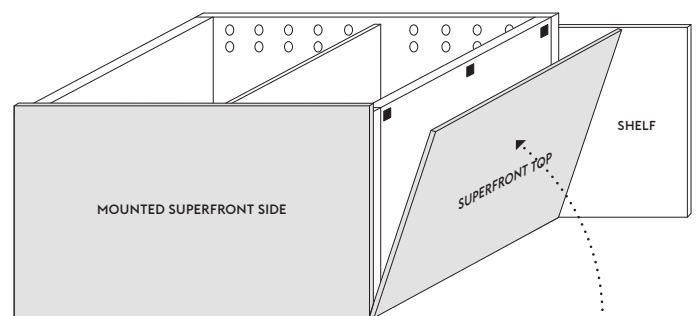


### 5. Tilt the top in place.

Do this step first without removing the cover paper on the MountPads so that you get the hang of it before you do it for real.

Place the top as shown below. Be sure to keep the top tight against the shelf that you hold along the side.

Slowly tilt the top upward until it touches the MountPads. Make sure that it ends up in the right position.



**PRESS HARD OVER EACH MOUNTPAD FOR AT LEAST 30 SECONDS.** This is important because the adhesive in our MountPads cure under pressure.

## Safety!

Be sure to always follow the safety instructions that apply to your furniture. Always secure the cabinet to the wall. This also applies to low cabinets where the weight distribution changes drastically when the fronts open. Especially in the case of solid quality fronts as ours. Use the anchor brackets supplied with the Ikea cabinet.